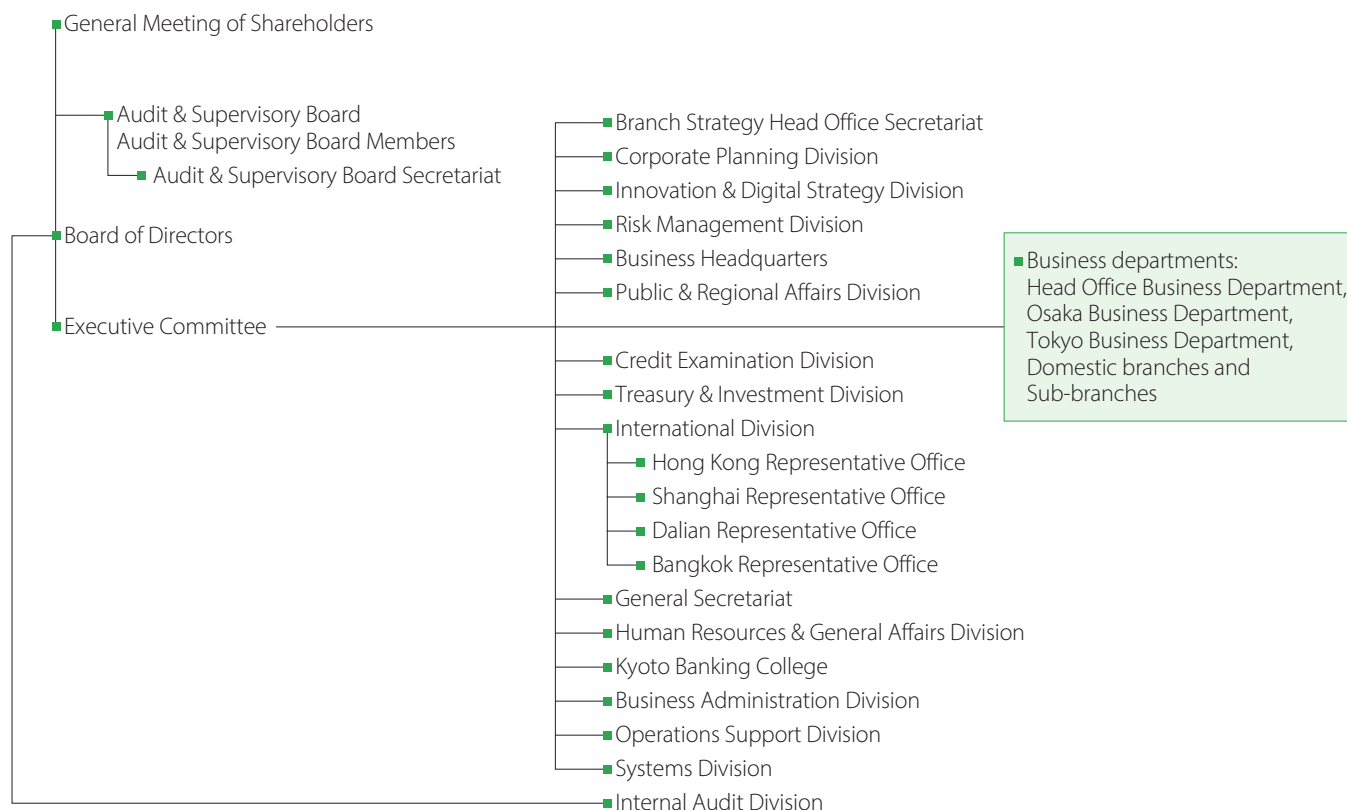


# Corporate Profile

## The Bank's Organization (As of July 1, 2021)



## Board of Directors and Audit & Supervisory Board Members (As of June 29, 2021)

**President**  
Nobuhiro Doi

**Senior Managing Director**  
Masaya Anami

**Managing Directors**  
Toshiro Iwahashi  
Mikiya Yasui  
Hiroyuki Hata

**Directors**  
Junko Otagiri (external)  
Chiho Oyabu (external)  
Eiji Ueki (external)

**Standing Audit & Supervisory Board Member**  
Masahiko Naka

**Audit & Supervisory Board Members**  
Hiroyuki Ando  
Hiroyuki Nakatsukasa (external)  
Motoko Tanaka (external)

**Managing Executive Officers**  
Kazuhiro Waki  
Hiroshi Nishimura  
Minoru Wada  
Kenji Hashi  
Hiroyuki Tsuji

**Executive Officers**  
Hisamitsu Ito  
Minako Okuno  
Kazuhito Aoki  
Kenichi Uegaki  
Hiroyuki Shikata  
Takashi Kawasaki  
Motoyoshi Tanaka  
Takanori Nakajima  
Shintaro Morimoto  
Kanji Habuchi  
Etsuji Motomasa

## Corporate Data (As of March 31, 2021)

### Date of Establishment

October 1, 1941

### Number of Employees

3,430 (Non-consolidated)

### Number of Authorized Shares

200,000,000

### Number of Issued Shares

75,840,688

### Capital (Paid-in)

¥42,103 million

**R&I\* Rating** \*Rating and Investment Information, Inc.  
A  
**S&P\* Rating** \*Standard & Poor's  
A-

### Major Shareholders (Number of shares in thousands and percentage)

The Master Trust Bank of Japan, Ltd. (trust account)	4,945	(6.54%)
Nippon Life Insurance Company	3,033	(4.01%)
Custody Bank of Japan, Ltd. (trust account)	2,566	(3.39%)
Tokio Marine & Nichido Fire Insurance Co., Ltd.	2,537	(3.35%)
Meiji Yasuda Life Insurance Company	2,500	(3.30%)
THE BANK OF NEW YORK MELLON 140051 (Standing proxy: Mizuho Bank, Ltd., Settlement Business Department)	1,996	(2.64%)
KYOCERA Corporation	1,596	(2.11%)
NORTHERN TRUST CO. (AVFC) RE SILCHESTER INTERNATIONAL INVESTORS INTERNATIONAL VALUE EQUITY TRUST (Standing proxy: The Hongkong and Shanghai Banking Corporation Limited, Tokyo Branch, Custody Service)	1,588	(2.10%)
The Master Trust Bank of Japan, Ltd. (Retirement Benefit Trust — OMRON Corporation account)	1,528	(2.02%)
SUMITOMO LIFE INSURANCE COMPANY	1,318	(1.74%)

### International Service Network

#### • Head Office International Division

700, Yakushima-cho, Karasuma-dori,  
Matsubara-Agaru, Shimogyo-ku,  
Kyoto 600-8652, Japan  
Phone: +81-75-361-2211  
Fax: +81-75-343-1276  
SWIFT: BOKF JP JZ

#### • Shanghai Representative Office

18th FL, Hang Seng Bank Tower,  
1000 Lujiazui Ring Road,  
Pudong New Area, Shanghai,  
People's Republic of China  
Phone: +86-21-6841-0575  
Fax: +86-21-6841-1771

#### • Bangkok Representative Office

Unit 2104, 21st Floor,  
Park Ventures Ecoplex,  
57 Wireless Road, Lumpini,  
Pathumwan, Bangkok 10330,  
Thailand  
Phone: +66-2116-3040  
Fax: +66-2116-3045

#### • Hong Kong Representative Office

Unit 2001, 20/F., Tower 1, Admiralty Centre,  
18 Harcourt Road, Hong Kong, S.A.R.,  
People's Republic of China  
Phone: +852-2525-0727  
Fax: +852-2521-8538

#### • Dalian Representative Office

21F Shenmao Building,  
147 Zhongshan Road,  
Xigang District, Dalian,  
People's Republic of China  
Phone: +86-411-3960-8611  
Fax: +86-411-3960-8618

### Consolidated Subsidiaries

Name	Establishment	Capital	Line of business
Karasuma Shoji Co., Ltd.	October 1958	¥ 10 million	Managing real estate services for the Bank of Kyoto
Kyoto Guaranty Service Co., Ltd.	October 1979	30	Credit guarantee services
Kyoto Credit Service Co., Ltd.	November 1982	50	Credit card services (DC)
Kyogin Card Service Co., Ltd.	September 1989	50	Credit card services (JCB, Diners)
Kyogin Lease & Capital Co., Ltd.	June 1985	100	Leasing and investment services
Kyoto Research Institute, Inc.	April 1987	30	Research and business consulting services
Kyogin Securities Co., Ltd.	October 2016	3,000	Securities business